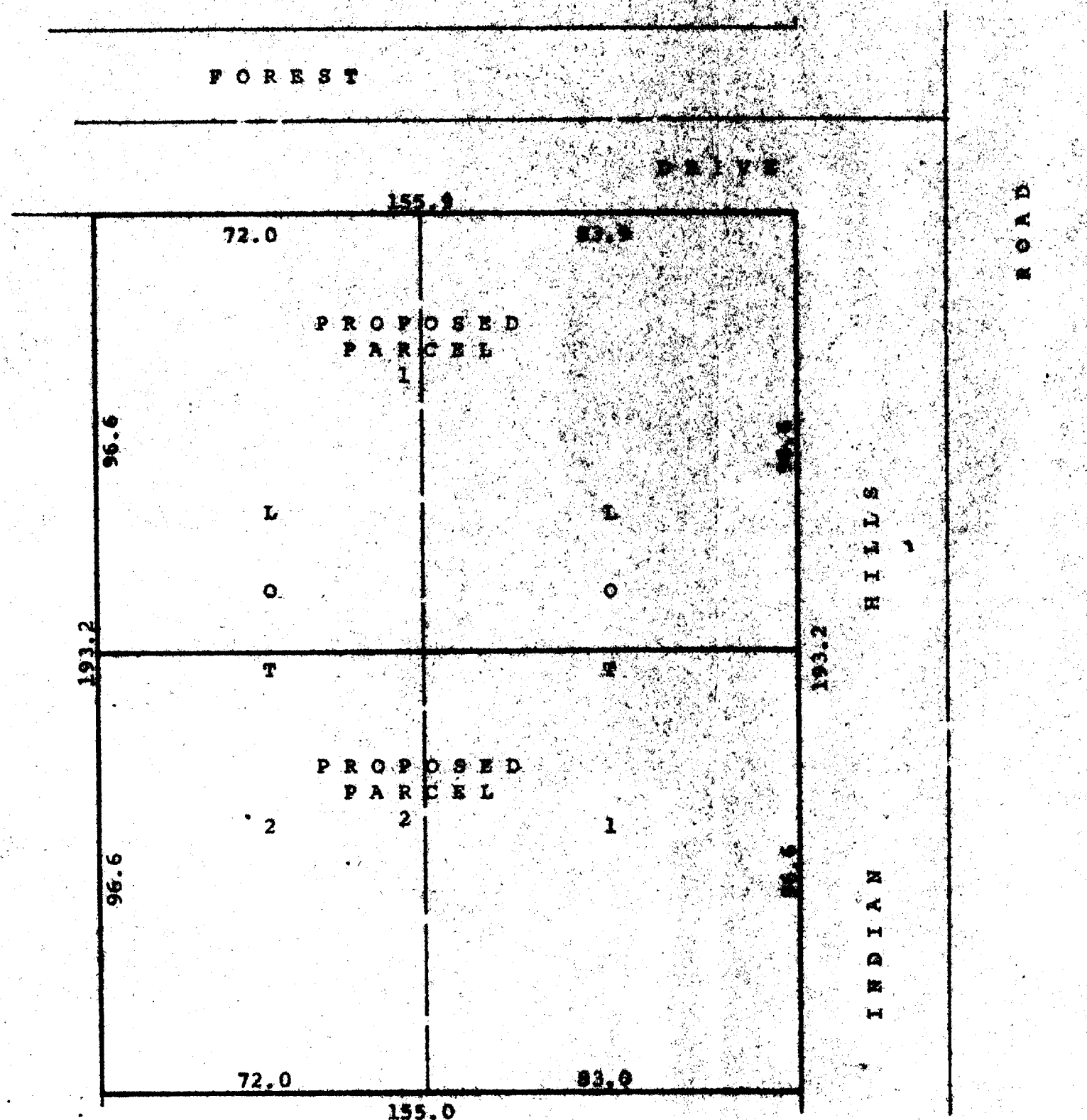


DUNHAM SURVEYING, S.C.  
SURVEYING AND ENGINEERING  
DELAWARE, VIRGINIA 22031



Scale - 1" = 30'

Plat showing proposed division of Lots 1 and 2  
of Glenwood Terrace, a Subdivision located in  
the Village of Fontana on Geneva Lake, Walworth  
County, Wisconsin.  
July 24, 1979

*George T. Dunham*  
George T. Dunham, Surveyor

